

EXTRACTEZE™

Titanium Root Tip Remover

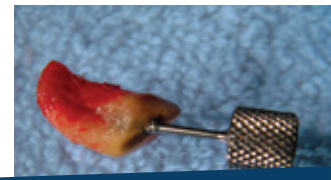
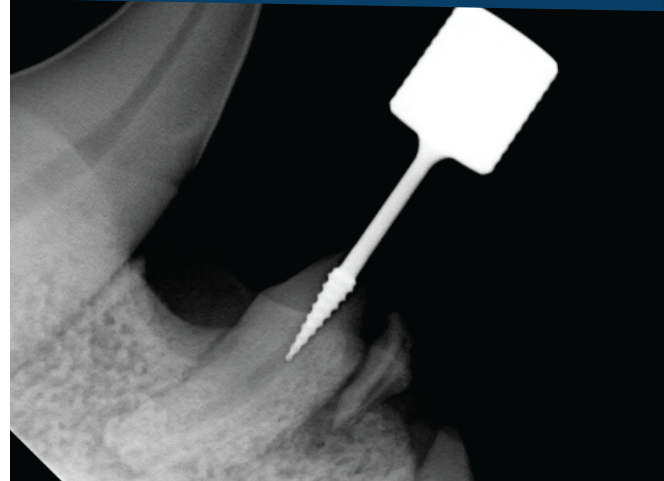
The ExtractEZE™ Root Tip Remover (RTR) is a **fingertip grip instrument** used to extract broken, severely worn or decayed root tips. It allows the practitioner to quickly secure and remove the root tip from the tooth socket while minimizing damage to the surrounding tissue.

Sold individually or in sets of 2, 3 or 5.

MADE IN
USA

Features

- Working end has a sharp surgical screw tip, with each thread designed to be an anchoring, cutting edge which secures into the root's dentin once seated
- Surgical cutting edges are designed to allow the RTR to "self-seat" into the root canal walls
- Designed to find and access the root canal within the limited space and visibility of the patient's mouth
- Cutting edge angle easily anchors into a larger root tip canal, providing leverage to sever the periodontal ligament in most cases
- Due to the various degrees of ligament attachment to the root, luxation may be needed. Inserting the RTR prior to luxation is recommended
- Does NOT attach to high or low speed handpieces



Variety of thread angles and working lengths available.

Available Soon: Mechanical Lifter to aid in removing root tips!

MAI Animal Health - UNITED STATES
605 Pro-Ject Drive
Elmwood, WI 54740
1.800.447.0687
sales@maianimalhealth.com

MAI Animal Health - EUROPE
4 Merlin Way
Bowerhill Industrial Estate
Melksham, Wiltshire SN12 6TJ
+44 (0) 1225 791 184
sales.uk@maianimalhealth.com

MAI Animal Health - AUSTRALIA
5-7 Burrundulla Road
P.O. Box 1147
Mudgee NSW 2850
+61 (0) 2 6372 6622
sales.au@maianimalhealth.com

MAI Animal Health - NEW ZEALAND
3A Marken Place
Glenfield, Auckland 0627
+64 (0) 9 444 2115
sales.nz@maianimalhealth.com



©2015 MAI Animal Health

Find us on  